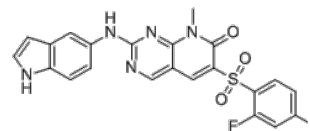


Product Name : ON1231320
Cat. No. : PC-73207
CAS No. : 1312471-39-8
Molecular Formula : C₂₂H₁₅F₂N₅O₃S
Molecular Weight : 467.45
Target : Polo-like Kinase (PLK)
Solubility : 10 mM in DMSO



Biological Activity

ON1231320 is a highly specific, ATP-mimetic polo-like kinase 2 (**PLK2**) inhibitor with IC₅₀ of 0.31 μM.

ON1231320 displays no activity against PLK1//3/4 (IC₅₀>50 μM), high selectivity against a panel of 288 wild-type, 55 mutant and 12 special kinases.

ON1231320 affects cell cycle progression by blocking tumor cells in the G2/M phase however it does not affect normal human fibroblasts.

ON1231320 has anticancer effects in glioma cells.

References

M V Ramana Reddy, et al. *Bioorg Med Chem*. 2016 Feb 15;24(4):521-44.

Shashidhar S. Jatiani, et al. *Cancer Res* (2011) 71 (8_Supplement): 643.

Caution: Product has not been fully validated for medical applications. Lab Use Only!

E-mail: tech@probechem.com